

Community Report

CELEBRATING *with service*

During our centennial year, Baptist Health celebrated 100 Years of Caring with 100 Days of Service. Going by the numbers, Baptist Health's centennial gifts to its communities have paid great dividends.

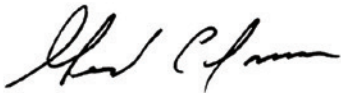
While the goal was 100 Days of Service, our staff and providers far exceeded that mark, logging 176 days of service during 2024. During those 176 days, our staff and providers have:

- Touched nearly 11,000 lives.
- Partnered with 88 community agencies.
- Screened more than 2,400 people for heart, lung, colon, stroke and orthopedic issues.
- Donated nearly \$36,000 worth of food.
- Supplied about 82,000 baby care items to new moms.
- Furnished a total of 651 pairs of shoes and backpacks for school children.
- Seen more than 300 volunteers collect 258 bags of trash.
- Introduced 117 students to healthcare careers.
- Collected 350 units of blood to meet local needs.

We also celebrated with ribbon cuttings for Baptist Health Hamburg, the pavilion at Baptist Health Hardin, a Cardiovascular unit at Baptist Health Floyd, and the Central Pharmacy Services Center and Behavioral Health units at Baptist Health La Grange. We even lit Louisville's Big Four pedestrian bridge in our signature colors to mark our Nov. 17 anniversary week.

When the doors of Kentucky Baptist Hospital were opened, it's unlikely that the proud founders envisioned the Baptist Health of today with its 10 hospitals and more than 470 points of care. But we know they shared the same mission: to provide, coordinate and improve the health of our communities.

Our leaders made that dream come true in 1924. And the dream is alive (and well) today.



Gerard Colman, PhD
Chief Executive Officer
Baptist Health



Scan the QR code to view
video highlights of the
100 Days of Service events.

MISSION

Baptist Health demonstrates the love of Christ by providing and coordinating care and improving health in our communities.

SHARED VISION

Baptist Health will lead in clinical excellence, compassionate care and growth to meet the needs of our patients.

FAITH-BASED VALUES

Integrity, Respect,
Compassion, Excellence,
Collaboration and Joy.



January

BABY SUPPLY DRIVE

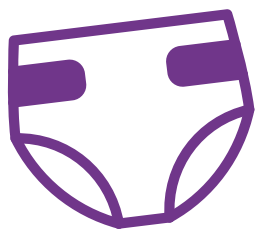
Moms and babies were the first recipients of Baptist Health's 100 Days of Service. Physicians and staff gathered diapers and baby supplies, delivering them to community partners on Maternal Health Awareness Day.

The drive was a natural for hospitals ranked No. 1 in Kentucky for delivering babies – 1 in every 4 babies are born in a Baptist Health hospital.

In 1924, Kentucky Baptist Hospital devoted an entire floor to mothers and babies. Within its first two weeks, the hospital welcomed its first birth, a little girl named after the two delivery room nurses.

|| To all Baptist Health employees ... thank you, thank you! We truly appreciate our partnership with Baptist Health. ||

– Alexa Hughes, director, Granny's Birth Initiative, community partner



35,838

Diapers collected for our community



45,962

Wipes donated



10

Local agencies supported



February

HEART SCREENINGS

Baptist Health went to the heart of the matter with free screenings for heart disease, a top health concern and the No. 1 cause of death in its communities.

The health system has long been known as a leader in heart care, offering advanced diagnostic testing, treatment and cardiac rehabilitation. One in 4 open heart surgeries in Kentucky are performed at a Baptist Health hospital.

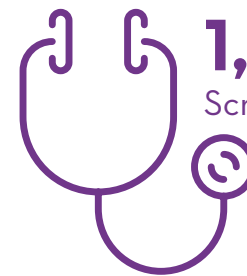
The original Kentucky Baptist Hospital in Louisville was the site of the city's first open heart surgery.

“ We want to make sure we’re meeting folks where they are and where they can access screenings at the right time, at the right place. ”

– Cecelia Yeary, vice president, Cardiac & Oncology Services, Baptist Health Lexington



1,286
Participants



1,677
Screenings



20 Community partner organizations



March

COLON CANCER AWARENESS

In March, Colon Cancer Awareness Month, the focus was on colon cancer screening.

Colon cancer is more common in Kentucky than in any other state in the nation, making its prevention and treatment a top priority for Baptist Health.

Increasing awareness of cancer prevention and early detection through screening is important, especially in underserved communities.

Baptist Health was the first in the state to open a dedicated inpatient unit for cancer patients in 1977. That leadership continues: 1 in 5 cancer patients in Kentucky are treated at Baptist Health.

“ We really want people to remain healthy and get [screened] early, because early detection has so much better outcomes. ”

– Mike Muscarella, executive director, Ambulatory Services, Baptist Health Paducah



1,790+
Participants



330+
Screenings, health risk assessments and more



14 Community partner organizations



April

FOOD DRIVE

Feeding the hungry was the challenge employees met in April, as they partnered with food banks and other local groups to reduce food insecurity.

Several Baptist Health locations rank food insecurity among the community's most pressing health concerns. Efforts to address it are rooted in the system's history, as Kentucky Baptist Hospital not only served nutritious meals to patients, but volunteers delivered food to patients' families.

Access to healthy food is essential healthcare. By coming together to help those with food insecurity, Baptist Health demonstrated a commitment to wellness for all.

|| We know from our patients coming to us that food insecurity is a real problem, so any way we can try and help be a solution is a great way for us to be able to give back. ||

– Clint Kaho, president, Baptist Health La Grange



\$28,960
Food donations



\$6,874
Cash donations



\$35,800+
Total donations

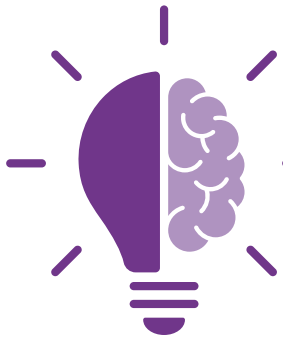


9 Community partner organizations



422

Health screenings



1,575

Participants educated



12 Community partner organizations



May

STROKE AWARENESS

With high blood pressure as the top risk factor for stroke, checking those numbers is vital to preventing a “brain attack.” Baptist Health offered free blood pressure checks and other screenings during Stroke Awareness Month.

Kentucky has a higher death rate for stroke than the national average – the nation’s 14th highest. Stroke is Kentucky’s sixth leading cause of death and the fourth leading cause in Indiana.

Baptist Health has a robust stroke program, including telehealth to electronically link doctors with advanced training to patients in its more rural hospitals.

“It’s through our community involvement that we can educate and empower our patients and population to really take ownership of their own health.”

– John Godfrey, MD, chief medical officer, Baptist Health Hardin

June

HEALTHCARE CAREER CAMPS

Students explored healthcare careers during camps emphasizing hands-on learning and experiences, with a goal of growing the workforce.

Baptist Health has a strong legacy of education. The original Kentucky Baptist Hospital featured a school of nursing, graduating more than 2,200 nurses before closing in 1983.

Today, Baptist Health offers certified nursing assistant and medical assistant training. Baptist Health Louisville has graduated its first class of English as a Second Language learners to assist current employees in departments such as Environmental Services and Food and Nutrition Services.

|| I genuinely cannot stress enough that it was an amazing opportunity to be a part of, and I am really glad that I got selected for it. ||

– Callie, healthcare career camp student, Baptist Health Floyd



117 Students



185
Classroom
hours



7 Community partner
organizations



July

NEIGHBORHOOD CLEANUP

Cleanup work was a walk in the park as Baptist Health staff and their families tackled trash and spruced up outdoor spaces.

The cleanup effort focused on the importance of an active lifestyle in staying healthy and underscored that parks offer a no-cost recreation option for all. The project also fits community health goals regarding obesity.

Being outdoors is not only good for physical health, but also for overall mental health and well-being. It helps with managing stress, coping, and keeping a bright outlook.

|| Part of our mission is to improve the health of our communities, which is more than providing healthcare through our facilities, it's getting out and serving our community through events like this. ||

— Lauren Lloyd, director, board liaison and assistant to the CEO



313
Volunteers



258 Bags of trash collected



852
Hours of service



August

ORTHOPEDIC SCREENINGS AND EDUCATION

Fall prevention – including good balance and posture – were lessons delivered primarily to older adults during August.

Those with weaker bones are at higher risk for fractures. Improving bone health starts with getting enough calcium, vitamin D and physical activity.

Baptist Health has been in the bone health (orthopedics) business for a century. When the original Kentucky Baptist Hospital opened, the first procedure was a foot surgery.

Today, the health system is No. 1 in Kentucky for orthopedic surgeries, with 1 in 6 procedures performed at a Baptist Health facility.

“ Devotion to the community, collaboration with the community ... being inclusive, being diverse, and being visible within the community, that’s what Baptist Health is. ”

– Nicky Wright, Orthopedic program coordinator, Baptist Health Louisville





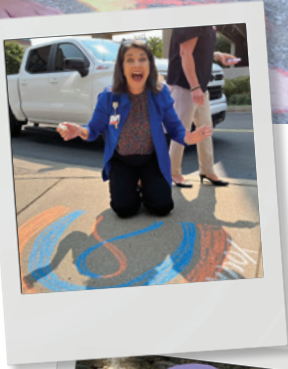
September

BEHAVIORAL HEALTH AWARENESS

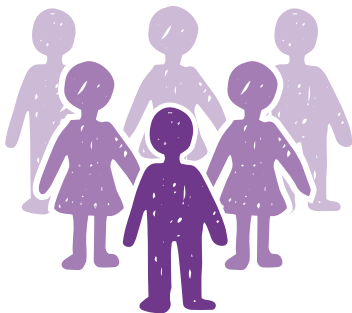
More than 50% of Americans experience a mental health condition in their lifetime. One in 5 will experience a mental illness in any given year.

Seeing a nearly 500% increase in behavioral health outpatients, Baptist Health has rapidly expanded its services – both in-person and virtually.

A legacy of caring for the whole person – including behavioral health – runs deep for the health system. The original Kentucky Baptist Hospital in Louisville was among the first private hospitals in the nation to open a psychiatric unit in 1949.



24 Community events, including Chalk the Walk, to raise mental health awareness



4,750 Participants

“There are so many people in the shadows – they hide their feelings and thoughts – and we want people to understand we are here for them ... they are not alone in this world, they don’t have to stay in the shadows.”

– Mike Dezarn, recreation therapist, Baptist Health Corbin

October

FLU VACCINES

Taking a jab at the flu with vaccine clinics proved beneficial for many, especially those who may have trouble accessing preventive care. Partnering with local agencies made many flu shot clinics possible.

Getting a flu shot is one of the best ways to prevent the flu and its fever, headache, cough, sore throat, runny nose, sneezing and body aches. October is the optimum month to get the shot.

Baptist Health is committed to protecting the health of its communities, and these clinics neatly fit that mission.

“This is about opening our clinics, opening our hearts, showing compassion to those around us, and giving back to the community that’s helped us for the last 100 years.”

— Kendall Mills, physician practice lead (Frankfort), Baptist Health Medical Group



365

Flu shots administered



16 Community partner locations



November

LUNG CANCER AWARENESS

Low-dose CT scans, which can detect lung cancer when it's small, can reduce the death rate by up to 20%. These scans were offered in many communities, some on Saturdays.

Today, Baptist Health, Kentucky's largest health system, has invested in early detection with robotic bronchoscopy. Lung cancer is the nation's leading cause of death. With early detection and treatment, the cure rate is 92%.

Historically, Baptist Health has been a leader in lung cancer awareness and prevention. The original hospital was the first in Kentucky to remove cigarette vending machines.

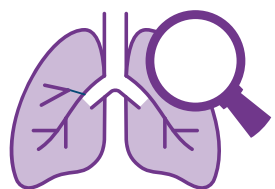
“In our mission, it says to demonstrate the love of Christ, and what better way for us to do that than to host events like this – where we really get to meet the community where they are and connect them to services.”

– Sara Stringfield, public relations & marketing manager, Richmond



93

Lung cancer screenings



108

Event participants



5,700+

Virtual tour video streams

December

BLOOD DRIVE

Baptist Health staff, providers and their families lined up to roll up their sleeves and give the gift of life for the holidays.

The winter months are when blood is most needed, as holiday celebrations, illness and poor weather can deter donors.

Besides helping others through blood donations – including accident victims and cancer patients – studies have shown that donating blood at least once a year can improve blood flow and reduce arterial blockage. In turn, this could reduce a donor's risk of a heart attack by up to 88%.

|| One of the important things about giving blood is that the whole community needs it – it could be a family member, a friend at work ... it could be you, yourself one day. ||

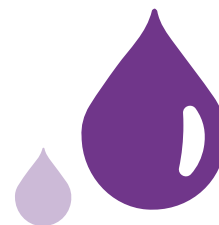
– Lee Dossett, MD, chief medical officer, Baptist Health Lexington



438
Donors



161
First-time donors



350
Units of blood collected

BY THE *numbers*

PATIENT CARE

2,783 licensed beds
 474 points of care
 97,881 inpatients
 2.23 million outpatients
 382,225 emergency visits
 1,391 open heart surgeries
 12,212 births
 233,175 oncology visits
 1,820 employed providers
 375,018 Urgent Care visits
 134,413 Virtual Care visits
 96,632 Home Care visits
 36,506 Behavioral Health visits

ECONOMIC IMPACT: SYSTEM

\$4.8 billion in total revenue
 \$887 million in local purchases
 \$172.1 million in state and local taxes

SYSTEM ECONOMIC IMPACT: EMPLOYEES

\$105 million in state and local taxes
 \$1.9 billion in wages

COMMUNITY BENEFIT

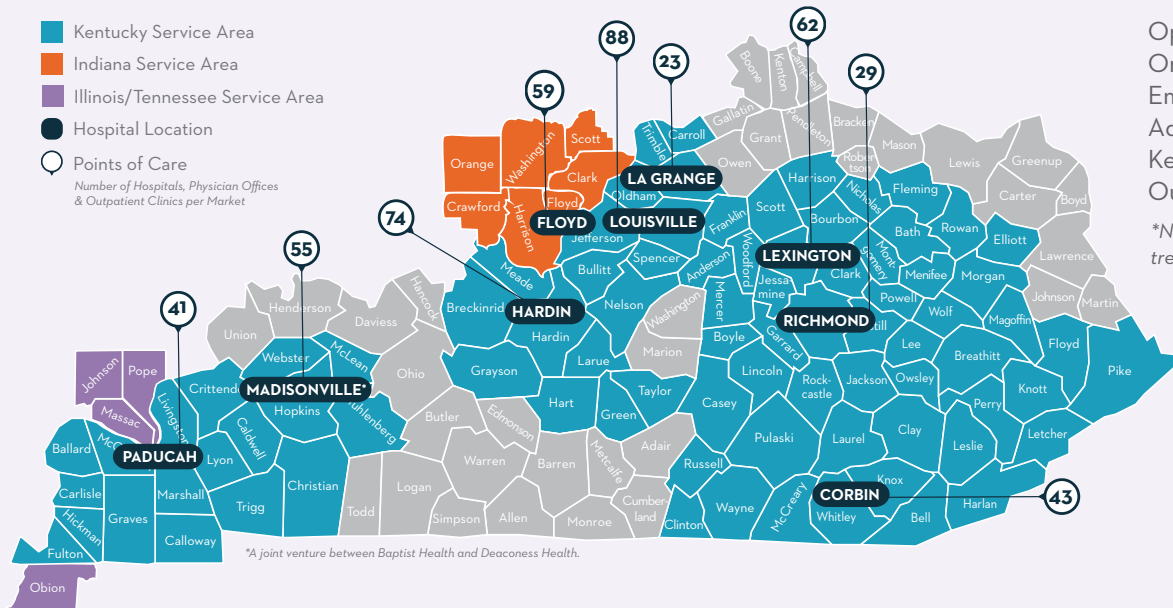
\$17.8 million in community health improvement, health professions education and cash donations
 \$206.2 million in subsidized health services
 \$10.4 million in Medicaid costs not reimbursed
 \$70.9 million in charity care for those unable to pay
\$295 MILLION TOTAL

BAPTIST HEALTH FOUNDATION GIVING

Corbin: **\$3.8 million**
 Floyd*: **\$335,711**
 Louisville and La Grange: **\$6.2 million**
 Hardin: **\$3 million**
 Lexington: **\$2 million**
 Paducah: **\$4.6 million**
 Richmond: **\$1.4 million**
 System Services: **\$5.7 million**
\$27 MILLION TOTAL

SERVICE AREAS

- Kentucky Service Area
 - Indiana Service Area
 - Illinois/Tennessee Service Area
 - Hospital Location
 - Points of Care
- Number of Hospitals, Physician Offices & Outpatient Clinics per Market



*A joint venture between Baptist Health and Deaconess Health.

RANKED #1*

Open heart surgeries (1 in 4)
 Orthopedic surgeries (1 in 6)
 Emergency visits (1 in 8)
 Admissions (1 in 6)
 Kentucky births (1 in 4)
 Outpatient visits (1 in 6)

**Number of patients in Kentucky treated at Baptist Health*

Community Report statistics are from FY 23-24.
 Baptist Health Foundation statistics are from calendar year 2023.
 *Launched in April 2023.



As part of the centennial celebration, Baptist Health encouraged employees to participate in healthy, stress-relieving activities to improve their overall well-being. One of these activities was coloring 100-year anniversary logo art (shown above), which provided a mindful break to help staff connect with co-workers and unwind from the pressures of work.



BAPTIST HEALTH®

100
YEARS

1901 Campus Place
Louisville, KY 40299
BaptistHealth.com